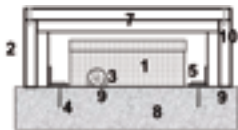
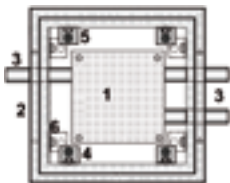


HERCULES COVER

Assembly instructions

Cable connections using AHD E30-E90 Hercules cover

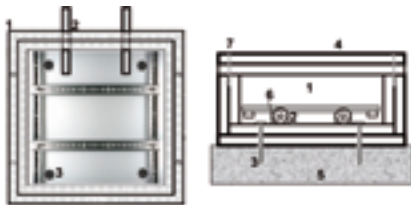


- | | |
|-------------------------------|---------------------|
| 1. Junction box | 6. Anchor bolt |
| 2. AHD E30-E90 Hercules cover | 7. Lid |
| 3. Cable inlet | 8. Wall |
| 4. Anchor screws | 9. Fire-stop mastic |
| 5. Fastening bracket | 10. Lid bolt |

1. Cable connections or junctions can be installed using a conventional junction box (1) made of poly-carbonate and terminals made of polyamide 6.6.
2. Cut openings into the bottom of the AHD E30-E90 Hercules cover (2) for the cable inlets (3).
3. Drill the plug holes for the fasteners (4).
4. Depending on your space requirements, you can fasten the 4 brackets (5) to the intended anchor bolts (6).
5. Clean the assembly surface, remove the lid from the AHD E30-E90 Hercules cover (7) and fasten the enclosure using the correct anchor screws (4) until there is a gap of approx. 5 mm between the enclosure (2) and wall (8). Fill this gap and the cable inlets using S 100 SM-K fire-stop mastic (9). Next, tighten the enclosure into place using the anchor screws (4). Scrape away or smoothen any protruding fire-stop mastic (can be washed away or thinned using water during the workability period).
6. Close the lid on the AHD E30-E90 Hercules cover (7) using the correct lid bolts (10). (Do not seal the cover using fire-stop mastic!)

Note: The spacing between the side walls of the AHD E30-E90 Hercules cover and the junction boxes must be at least 35 mm and 10 mm between the lids.

Cable connections using AHD E30-E90 Hercules terminal box



- | | |
|--------------------------------------|---------------------|
| 1. AHD E30-E90 Hercules terminal box | 5. Wall |
| 2. Cable inlet | 6. Fire-stop mastic |
| 3. Anchor screws | 7. Lid screw |
| 4. Lid | |

1. Drill the plug holes for the anchor screws (3).
2. Clean the mounting surface, remove the lid from the AHD E30-E90 Hercules terminal box (4) and fasten the enclosure using the corresponding anchor screws (4).
3. Drill cable inlets into the enclosure large enough for the diameters of the cables.
4. After inserting the cables, generously fill the gap using S 100 SM-K fire-stop mastic (6) with enough material to cover the entire thickness of the enclosure walls. Scrape away or smoothen any protruding fire-stop mastic (can be washed away or thinned using water during the workability period).
5. Fit conventional terminals or LSA+ onto the standard support rail and connect the wires.
6. Check that the cable inlets (2) are sufficiently sealed using fire-stop mastic (6) and add more if necessary.
7. Close the lid on the AHD E30-E90 Hercules terminal box (4) using the correct lid bolts (7). (Do not seal the cover using fire-stop mastic!)