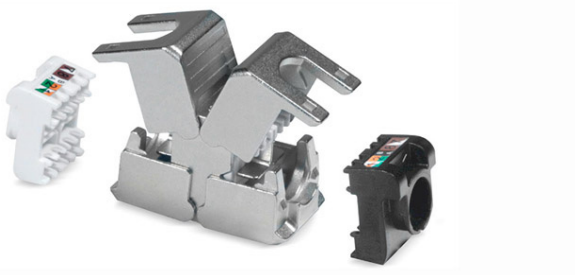


Cable connector Tool-less Compact

Class E_A IP20



Cable connector, Class EA, IP20

Description

Connection of copper data cables 4 x 2 x AWG24/1 to AWG 22/1 (solid-wire) and AWG26/7 (flexible-wire)

IDC insulation displacement terminals, without special tools

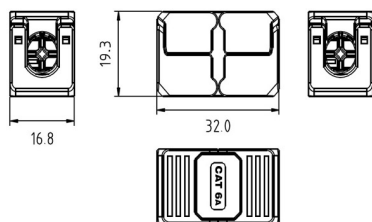
Dimensions: W x L x H: 16.8 x 32.0 x 19.3 mm

Housing: metal, zinc die-cast, shielded

Protection class: IP20

360° shield connection

Cable feed from two sides



Application

For connecting (extending) shielded copper data cables up to category 7_A.

In conjunction with Cat.6_A cables, the class E_A requirements of ISO/IEC 11801 are met (from 20 m cable length on both sides of the cable connector).

Suitable for PoE, PoE+, PoE++

Versions

Material number	Product	Weight [kg]	Packing unit
41548600ZY	Cable connector, Class E _A , toolless	0.16 kg	1 pc.