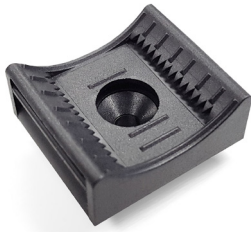


HD-DCS Cable fixation base for HD-DCS modular Panel



HD-DCS Cable fixation base 8-35 mm



HD-DCS Cable fixation base 4-20 mm

Beschrijving

For mounting installation cables on the cable tray of the HD-DCS panel.
Velcro tape provides the necessary hold.
The Velcro base is attached without tools by a 45° turn.

Toepassing

Cable fixation base HD-DCS modular panel.

Versions

Materiaal nummer	Artikel	Gewicht [kg]	Verpakkingseenheid
473042	HD-DCS Cable fixation base 4-20 mm	0,01 kg	10 stk.
473043	HD-DCS Cable fixation base 8-35 mm	0,01 kg	10 stk.