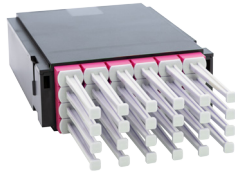


HD-DCS BO module, 24x MPO, OM4

for HD-DCS modular panels



Description

Polycarbonate (PC) housing with press-fit cover.
At the rear the HD-DCS BO modules have two slots fitted with cable grommets.
Front couplers with translucent dust plugs.

Application

HD-DCS BO modules are suitable for all high-density and high-performance applications with parallel optic signals, particularly in the data centre environment.

They find modular application in the slots of the HD-DCS modular panels (19"/1U) in which they can be inserted from the front and the back.

They are used to accept pre-assembled MTP trunk cables.

A packing density of 1152 fibres (MTP₁₂) on 1U are achieved with these type of modules.

Propriétés générales

Capacité d'acceptation	288 fibres (MTP ₁₂)
------------------------	---------------------------------

Propriétés optiques

Adaptateur, face avant	4 x 6MPO, violet bruyère (Dust plug)
Adapter colour, front side	violet bruyère
Adapter material, front side	Polymère
Nombre d'adaptateurs, face avant	4
Type d'adaptateur, face avant	6MPO

Propriétés mécaniques

Protection laser avant	No
Protégé contre la poussière et le laser, avant	Dust plug
Protégé contre la poussière, avant	Yes

Scope of delivery

Housing, equipped with 4x 6MPO adapter with translucent dust plug protection on front side.
Rear side is fitted with a cable grommet.

Normes

MTP standard (IEC)	IEC 61754-7, IEC 61755-3-31, IEC 61755-3-32
--------------------	---

Remarque

As high-performance patch cables for high-density solutions Datwyler recommends the HD-DCS MTP patch cables with push-pull rods.

Versions

Numéro de matériau	Produit	Dimensions extérieures	Couleur	Matière	Poids [kg]	Unité d'emballage
473571	HD-DCS BO module, 24x MPO, OM4	39 mm x 100 mm x 120 mm	noire	Polycarbonate (PC)	0,16 kg	1 pc.

MTP® and MTP Elite® are registered brands of US Conec.

Sous réserve de modifications techniques

A partir de 2021-01-22 11:00:36