

Outlets IP67

surface mounted & installation in devices

with 1 RJ45 module MS-C6A



1



2



3

1 Data outlet IP67
2 Coupling socket IP67

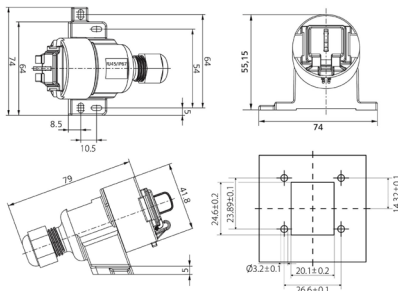
3 Mounting flange IP67

Description

Data outlets IP67 with 1 RJ45 module MS-C6A 1/8 Cat.6A (shielded) for the transmission of Ethernet protocols in harsh industrial environments in which contaminations may occur:

1. Surface-mount data outlet IP67 with 1 module MS-C6A 1/8 shielded
2. Coupling socket IP67 with 1 module MS-C6A 1/8 shielded
3. Mounting flange IP67 with 1 module MS-C6A 1/8 shielded - for installation in devices

In order to ensure a secure data transmission, the compatible components offer a large 360° braided connection that results in excellent EMC properties. The covers that are permanently attached to the casings prevent water, dust, dirt and other contaminants from entering the RJ45 jack when unmated. Usable in connection with IP67 or standard RJ45 patch cords in different lengths.



Applicazione

Structured premises cabling in the industrial sector - components with protection rating IP67 in accordance with EN 50173-2 (draft) and environment classes M3, I3, C3, and E3. These articles should not be used outdoors because of the risk of condensation.

Versions

Numero Materiale	Product	Colore	Peso [kg]	Packing unit
309155	Data outlet IP67 with 1x RJ45 module MS-C6 _A	grigio chiaro	0,07 kg	1 pc.
309156	Coupling socket IP67 with 1x RJ45 module MS-C6 _A	grigio chiaro	0,1 kg	1 pc.
309157	Mounting flange IP67 with 1x RJ45 module MS-C6 _A	grigio chiaro	0,05 kg	1 pc.

Con riserva di modifiche tecniche

A partire da 2021-01-27 11:42:06