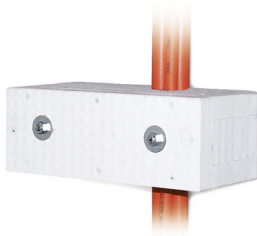


## WUM support measure

### WUM

for vertical cable installation



### Description

Effective support measure for vertical installation of Datwyler safety cables with intrinsic fire resistance using the C-shaped rail 2970 SLD. Meandering cable laying is not necessary if the WUM is used (intervals: up to 3.5 m).

### Applicazione

The WUM is slipped over the strap clamp that attaches the cable to the C-shaped rail at intervals of up to 3.5 m. It is attached to the C-shaped rail by means of slide nuts and threaded rods. Hollow spaces are filled with mineral wool. The cable inlet and back of the WUM are sealed with fire protection filler.

The WUM E30 and WUM E90 can be used with all Datwyler Keram cable types

(N)HXH / (N)HXH CL / (N)HXCH FE180/E30-E60, (N)HXH / (N)HXCH FE180/E90, JE-H(St)H FE180/E30-E90 and JE-H(St)HRH FE180/E30-E90.

### Scope of delivery

Fire protection housing  
Fastening set  
Cartridge of fire protection filler  
Mineral wool

### Versions

Numero Materiale	Product	Dimensioni esterne	Peso [kg]	Packing unit
1301276	WUM 300 E30	100 mm x 370 mm x 135 mm	1,5 kg	1 pc.
1301278	WUM 400 E30	100 mm x 470 mm x 135 mm	2 kg	1 pc.
1301277	WUM 500 E30	100 mm x 570 mm x 135 mm	2,5 kg	1 pc.
1301275	WUM 300 E90	200 mm x 470 mm x 185 mm	6,18 kg	1 pc.
1301274	WUM 400 E90	200 mm x 570 mm x 185 mm	9,98 kg	1 pc.
1301273	WUM 500 E90	200 mm x 670 mm x 185 mm	6 kg	1 pc.