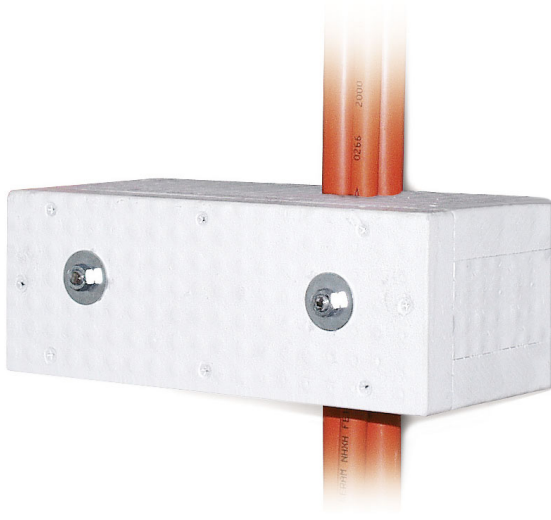


WUM support measure

WUM

for vertical cable installation



Descrizione

Effective support measure for vertical installation of Datwyler safety cables with intrinsic fire resistance using the C-shaped rail 2970 SLD. Meandering cable laying is not necessary if the WUM is used (intervals: up to 3.5 m).

Applicazione

The WUM is slipped over the strap clamp that attaches the cable to the C-shaped rail at intervals of up to 3.5 m. It is attached to the C-shaped rail by means of slide nuts and threaded rods. Hollow spaces are filled with mineral wool. The cable inlet and back of the WUM are sealed with fire protection filler.

The WUM E30 and WUM E90 can be used with all Datwyler Keram cable types

(N)HXH / (N)HXH CL / (N)HXCH FE180/E30-E60, (N)HXH / (N)HXCH FE180/E90, JE-H(St)H FE180/E30-E90 and JE-H(St)HRH FE180/E30-E90.

Ambito di consegna

Fire protection housing
Fastening set
Cartridge of fire protection filler
Mineral wool

Versioni

Codice art.	Prodotto	Dimensioni esterne	per binario a C 2970 SLD [mm]	Peso [kg]	Unità di imballaggio	GTIN / EAN
13012760ZY	WUM 300 E30	100 mm x 370 mm x 135 mm	300	1,05 kg	1 pc.	40393910217193
13012780ZY	WUM 400 E30	100 mm x 470 mm x 135 mm	400	1,34 kg	1 pc.	40393910217209
13012770ZY	WUM 500 E30	100 mm x 570 mm x 135 mm	500	1,62 kg	1 pc.	40393910217216
13012750ZY	WUM 300 E90	200 mm x 470 mm x 185 mm	300	5,45 kg	1 pc.	40393910217223
13012740ZY	WUM 400 E90	200 mm x 570 mm x 185 mm	400	9,98 kg	1 pc.	40393910217230
13012730ZY	WUM 500 E90	200 mm x 670 mm x 185 mm	500	6,32 kg	1 pc.	40393910217247
301370	Riempimento di protezione antincendio			15 kg	15 kg secchio di plastica	40393910193176

