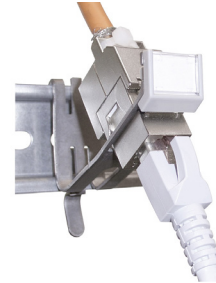


Rail adapter Keystone

rail-mounted

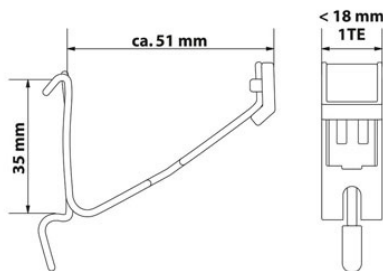
for 1 RJ45 module KS-T, KS-TC, KS-TS or KU-T



Rail adapter for 1 RJ45 module KS-T,KS-TC, KS-TS or KU-T

Description

Rail adapter for 1 tool-less RJ45 Keystone module KS-T,KS-TC plus, KS-TS (Slimline) or KU-T. Can be fitted onto any 35 mm standard (DIN) rail. Made of stainless steel, therefore always electrically conducted (via rail) with the building's equipotential bonding. Its width allows for installations of up to 12 modules in a row in any standard electrical distributor. Delivery without module. For the transmission of Ethernet protocols in structured premises cabling in the industrial sector.



Application

Suitable for the following Datwyler modules:

- PS-GG45 7A shielded
- RJ45 module KS-TC Plus 1/8 Cat. 6A shielded
- RJ45 module KS-T Plus 1/8 Cat. 6A shielded
- RJ45 module KS-T 1/8 Cat. 6/EA shielded
- RJ45 module KS-TS 1/8 Cat. 6/EA shielded
- RJ45 module KS-T 5 1/8 Cat. 5e shielded
- RJ45 module KU-T 1/8 Cat. 6 unshielded
- RJ45 module KU-T 1/8 Cat. 5e unshielded

Versions

| Material number | Product | Colour | Weight [kg] | Packing unit |
|-----------------|---|--------|-------------|--------------|
| 418025 | Rail adapter Keystone for 1x KS-T/KU-T/KS-TC (delivery without module) | silver | 0.02 kg | 1 pc. |