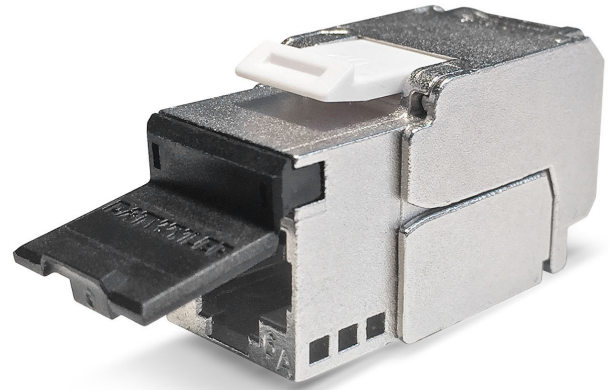
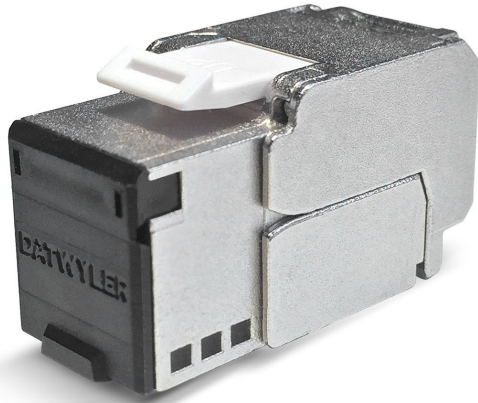


KS-TC Plus Cat.6_A (IEC) tool-less, compact

RJ45 module, shielded, Category 6_A (IEC)



KS-TC Plus Cat.6A (IEC) RJ45 module, tool-less, shielded, with dust shutter



Descrizione

With removable black dust shutter. Other colours available as accessories sets.

For the transmission of digital and analogue voice-, video- and data signals.

The KS-TC Plus RJ45 module is specified up to 500 MHz in compliance with the component standard IEC 60603-7-51.

Enables acceptance testing with high spare capacity at the limit values stipulated for Class EA Permanent Links when combined with shielded Category 6_A, 7, 7_A and 8 data cables. Therefore it is applicable for 10-gigabit Ethernet transmissions in accordance with IEEE 802.3. Useable for Power over Ethernet, PoE+ and 4PPoE application. Solid zinc die casting housing with mounting clip for installation in Keystone panels and outlets.

Contact spring with phosphor bronze alloy, plated with gold.

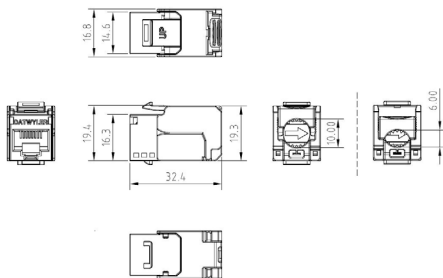
For connecting the wires a wire manager is used in combination with two integrated moveable housing wings for tool-less IDC connections. Only for cutting the wires a plane wire cutter is necessary.

The 360° metal shield ensures a durable fully shielded environment.

The module comes with an integrated strain relief, no cable tie is needed.

The module is re-usable.

Potential balancing possibility directly at the module when needed.



Proprietà generali

Youtube link	https://www.youtube.com/embed/e4AC7h4gKc8
Installation temperature	-10 °C - +60 °C
Storage temperature	-40 °C - +70 °C
Operating temperature	-40 °C - +70 °C

Proprietà elettriche

GBit/s	A 10 Gbit/s
Schermatura	schermati

Proprietà meccaniche

Connection type	Connettori a perforazione di isolante IDC
Solid copper wire	0.42 (AWG 26) - 0.65 (AWG 22)
Stranded copper wire	AWG26/7 - AWG23/7
Diameter over Insulation	0.70 mm - 1.40 mm
Re-connection	for AWG 22, AWG 23 and AWG 24 quando si usa lo stesso filo o un diametro maggiore
Re-usable	secondo ISO/IEC 11801 Allegato B

Standards

Cat./Class	Cat.6 _A / Class E _A
PoE	IEEE 802.3bt Type 4 (100W)
Connector standards	IEC 60512-99-002, IEC 60603-7-51
Cabling standards	ISO/IEC 11801, EN 50173-1, TIA/EIA 568-x

Versioni

Codice art.	Prodotto	Colore	Peso [kg]	Unità di imballaggio	GTIN / EAN
41806900ZF	Modulo RJ45 KS-TC Plus Cat.6 _A (IEC), senza attrezzi, schermato, con otturatore per polvere	argento	0,03 kg	12 pcs.	40393910211283
418069	RJ45 module KS-TC Plus Cat.6 _A (IEC) tool-less, shielded, with dust shutter	argento	0,03 kg	12 pcs.	40393910165005

Con riserva di modifiche tecniche

A partire da 2023-09-14 08:03:56