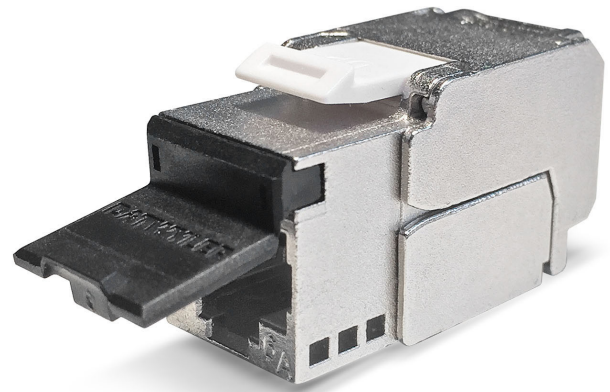
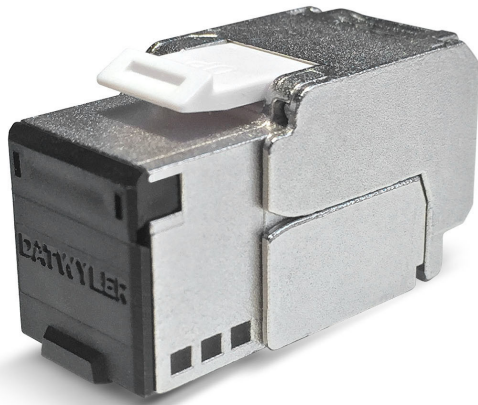


# KS-TC Plus Cat.6<sub>A</sub> (IEC) tool-less, compact

RJ45 module, shielded, Category 6<sub>A</sub> (IEC)



KS-TC Plus Cat.6A (IEC) RJ45 module, tool-less, shielded, with dust shutter



## Description

For the transmission of digital and analogue voice-, video- and data signals.

The KS-TC Plus RJ45 module is specified up to 500 MHz in compliance with the component standard IEC 60603-7-51.

Enables acceptance testing with high spare capacity at the limit values stipulated for Class EA Permanent Links when combined with shielded Category 6<sub>A</sub>, 7, 7<sub>A</sub> and 8 data cables. Therefore it is applicable for 10-gigabit Ethernet transmissions in accordance with IEEE 802.3. Useable for Power over Ethernet, PoE+ and 4PPoE application. Solid zinc die casting housing with mounting clip for installation in Keystone panels and outlets.

Contact spring with phosphor bronze alloy, plated with gold.

For connecting the wires a wire manager is used in combination with two integrated moveable housing wings for tool-less IDC connections. Only for cutting the wires a plane wire cutter is necessary.

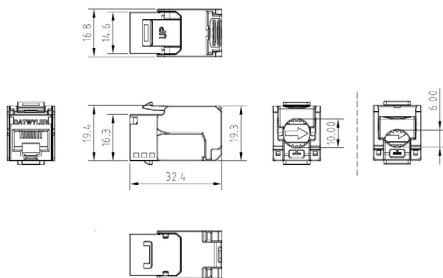
The 360° metal shield ensures a durable fully shielded environment.

The module comes with an integrated strain relief, no cable tie is needed.

The module is re-usable.

Potential balancing possibility directly at the module when needed.

With removable black dust shutter. Other colours available as accessories sets.



## General properties

Youtube link	<a href="https://www.youtube.com/embed/e4AC7h4gKc8">https://www.youtube.com/embed/e4AC7h4gKc8</a>
Installation temperature	-10 °C - +60 °C
Storage temperature	-40 °C - +70 °C
Operating temperature	-40 °C - +70 °C

## Electrical properties

GBit/s	Up to 10 Gbit/s
Shielding	shielded

## Mechanical properties

Connection type	IDC insulation displacement connectors
Solid copper wire	0.42 (AWG 26) - 0.65 (AWG 22)
Stranded copper wire	AWG26/7 - AWG23/7
Diameter over Insulation	0.70 mm - 1.40 mm
Re-connection	for AWG 22, AWG 23 and AWG 24 when using the same or bigger wire diameter
Re-usable	according ISO/IEC 11801 Annex B

## Standards

Cat./Class	Cat.6 <sub>A</sub> / Class E <sub>A</sub>
PoE	IEEE 802.3bt Type 4 (100W)
Connector standards	IEC 60603-7-51, IEC 60512-99-002
Cabling standards	ISO/IEC 11801, EN 50173-1, TIA/EIA 568-x

## Versions

Material number	Product	Colour	Weight [kg]	Packing unit	GTIN / EAN
41806900ZF	RJ45 module KS-TC Plus Cat.6 <sub>A</sub> (IEC) tool-less, shielded, with dust shutter	silver	0.03 kg	12 pcs.	40393910211283
418069	RJ45 module KS-TC Plus Cat.6 <sub>A</sub> (IEC) tool-less, shielded, with dust shutter	silver	0.03 kg	12 pcs.	40393910165005

Subject to technical modification

As of 2023-09-14 08:03:56