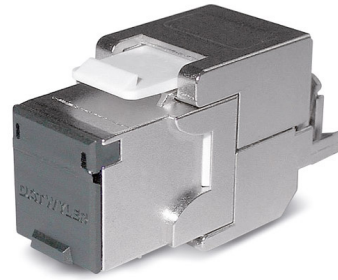
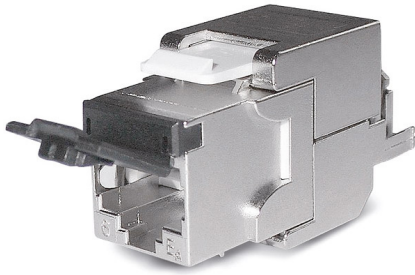


KS-T 1/8 tool-less Cat.6/E_A

RJ45 module, shielded, Category 6/E_A



RJ45 module KS-T 1/8 tool-less Cat. 6/EA with dust shutter



Descrizione

Other colours available as accessories sets.

For the transmission of digital and analogue voice-, video- and data signals.

The KS-T RJ45 module exceeds the IEC 60603-7-5 standard's requirements for Cat.6 connecting hardware up to 250 MHz. It also fulfils all Class EA Channel requirements up to 500 MHz when combined with Cat.7 and Cat.7A data cables. Therefore it is applicable for 10-gigabit Ethernet transmissions in accordance with IEEE 802.3.

Useable for Power over Ethernet Plus (PoE+) corresponding to IEEE 802.3at. Solid zinc die casting housing with mounting clip for installation in Keystone panels and outlets.

Contact spring with phosphor bronze alloy, plated with gold.

For connecting the wires a wire manager is used in combination with two integrated moveable housing wings for tool-less IDC connections. Only for cutting the wires a plane wire cutter is necessary.

The 360° metal shield ensures a durable fully shielded environment.

Strain relief via cable tie.

The module is re-usable.

Potential balancing possibility directly at the module when needed.

With removable black dust shutter.

Proprietà generali

Installation temperature	-10 °C - +60 °C
Storage temperature	-40 °C - +70 °C
Operating temperature	-20 °C - +60 °C

Proprietà elettriche

Gbit/s	A 10 Gbit/s
Schermatura	schermati

Proprietà meccaniche

Connection type	Connettori a perforazione di isolante IDC
Solid copper wire	0.50 (AWG 24) - 0.65 (AWG 22)
Stranded copper wire	AWG26/7
Diameter over Insulation	0.70 mm - 1.40 mm
Re-connection	for AWG 22, AWG 23 and AWG 24 quando si usa lo stesso filo o un diametro maggiore
Re-usable	secondo ISO/IEC 11801 Allegato B

Standards

Cat./Class	Cat.6 / Class E _A
PoE	IEEE 802.3bt Type 4 (100W)
Connector standards	IEC 60512-99-001, IEC 60603-7-5
Cabling standards	ISO/IEC 11801, EN 50173-1, TIA/EIA 568-x

Versioni

Codice art.	Prodotto	Colore	Peso [kg]	Unità di imballaggio	GTIN / EAN
41806000ZF	RJ45 module KS-T 1/8 tool-less Cat.6/E _A shielded with dust shutter	nero	0,03 kg	12 pcs.	40393910228601

Con riserva di modifiche tecniche

A partire da 2023-09-14 08:03:14